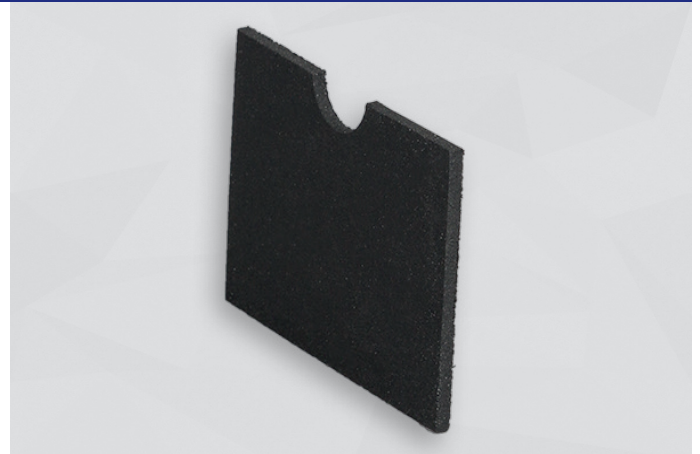




CELLO® EVA

Synthetic heavy foil with special flame-retardant minerals.

Applications: Construction and farm machinery, buses/ utility vehicles, household appliances, heating/ventilation/ AC systems, cabins/casings/hoods, machine construction



SAMPLE EVA 6-01 SK

TECHNICAL DATA

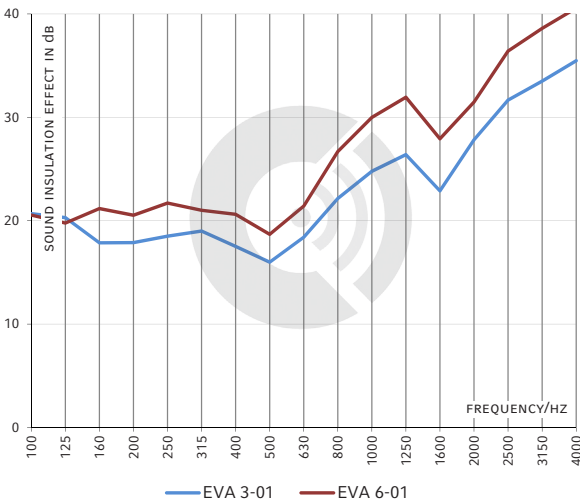
FLAMMABILITY	<ul style="list-style-type: none"> ▶ FMVSS 302, DIN 75 200, fulfilled ▶ ISO 3795, burning rate < 100 mm/min ▶ ECE R-118, annexes 6, 7 and 8 fulfilled (EVA 6-01 sk), Flame propagation: 0 mm/min
TEMPERATURE RESISTANCE	Placed on a steel surface: -50°C to +100°C, short-term up to +120°C
THERMAL CONDUCTIVITY / EN 12667	≤ 0.147 W/(m·K) at 10°C
WEIGHT	EVA 3-01: 3 kg/m ² ± 10% EVA 6-01: 6 kg/m ² ± 10%
HARDNESS / ISO 868	70 ± 5 Shore A

DIMENSIONS

PRODUCT	THICKNESS [mm]	THICKNESS TOLERANCE [mm]	SHEETS [mm]
EVA 3-01	1.5	± 0.3	1050 X 1250 OR 2100 X 1250
EVA 6-01	3.0	± 0.5	1050 X 1250 OR 2100 X 1250

Other thicknesses / dimensions on request. Ready-to-use parts according to your specifications or drawing.

TRANSMISSION LOSS / TEST PROCEDURE SIMILAR TO DIN EN ISO 10140-2



- BENEFITS**
 - ▶ Excellent sound insulation values
 - ▶ Very good flammability characteristics
 - ▶ Higher temperature resistance than a bitumen layer
 - ▶ Flexible, not sensitive to pressure, will not emit particles or cause smudges
- OPTIONS**
 - NK: no self-adhesive equipment
 - SK: with self-adhesive finish
- ADVICE**
 - ▶ Their specific composition makes Cello® EVA materials suitable for glue fixation on both sides, for example with an acrylate adhesive.
 - ▶ When applied on vertical surfaces or overhead, additional mechanical fixation is recommended.

Tested on Rv 5-8 perforated sheet (1 mm thick)