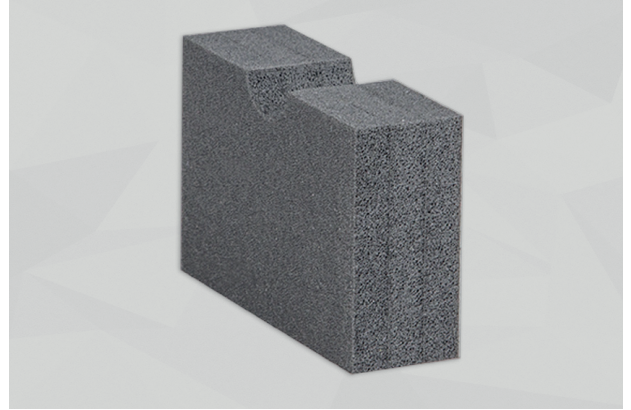




CELLO® D2500

Polyethylene-based foam with closed-cell, cross-linked structure. Because of its extremely low water retention (< 1%), the material is the ideal solution for thermal insulation applications.

Applications: Buses/utility vehicles, heating/ventilation/AC systems, cabins/casings/hoods, machine construction



TECHNICAL DATA

FLAMMABILITY	<ul style="list-style-type: none"> ▶ FMVSS 302, DIN 75 200: fulfilled ▶ ISO 3795: burning rate < 100 mm/min ▶ ECE R-118: annexes 6, 7 and 8 fulfilled (SK, 10 mm) (NK, ≥ 13 mm)
TEMPERATURE RESISTANCE	-50°C to +100°C
THERMAL CONDUCTIVITY	EN 12667: ≤ 0.035 W/(m·K) at 10°C
DENSITY	DIN EN ISO 845: 28 ± 2 kg/m ³
WATER ABSORPTION	< 1 VOL. %

DIMENSIONS

PRODUCT	TICKNESS [mm]	THICKNESS TOLERANCE [mm]	SHEETS* [mm]	ROLLS*
D2500	3, 6, 12	± 1.0	2100 X 1500 or 1050 X 1500	Rolls only for thicknesses of 3, 6 and 12 mm
	20	± 1.6		
	30	± 2.4		
	40	± 3.2		

Other thicknesses / dimensions on request. Ready-to-use parts according to your specifications or drawing.

*Untrimmed: Effective dimensions guaranteed as ordered, may be exceeded by some layers (foam, film, non-woven etc.).

MORE INFORMATION

BENEFITS	<ul style="list-style-type: none"> ▶ Excellent thermal insulation effect ▶ Very good chemical resistance against carbon hydrides and alcohol (DIN 53428) ▶ Effortless to cut with a cardboard cutter ▶ Nearly odorless
OPTIONS	<p>NK: no self-adhesive equipment</p> <p>SK: with self-adhesive finish</p>