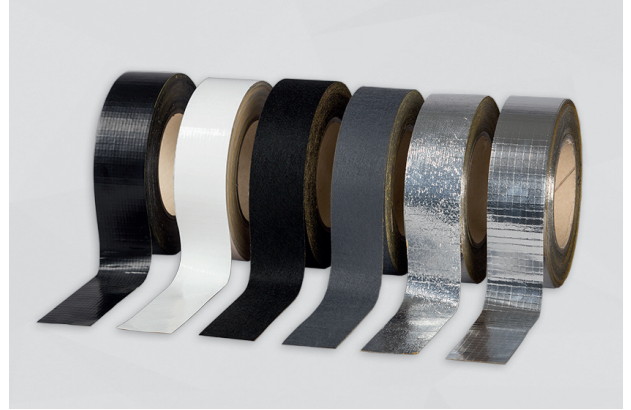




## CELLO® ADHESIVE TAPES

Cello® **ADHESIVE TAPES** are used for sealing edges, protecting components and certain surface areas that are susceptible to damage, or covering joints, seams or tears.

Basis of adhesive: Acrylate



Cello® ADHESIVE TAPES

### TECHNICAL DATA

#### FLAMMABILITY



- ▶ FMVSS 302, DIN 75 200: fulfilled
- ▶ ISO 3795: burning rate < 100 mm/min
- ▶ EN 45545-2: R1 + R7 + R17, HL 3 fulfilled (ALU-01 + ALU-04)
- ▶ ECE R-118: annexes 6, 7 and 8 fulfilled (PUR-01)

#### TEMPERATURE RESISTANCE

- 40°C to +150°C
- 40°C to +200°C (Cello® ALU-01)

#### ADHESIVE STRENGTH

CPA-4.01: Self-adhesive layer on steel plate: at least 20 N / 5 cm

#### WATER VAPOR TRANSMISSION

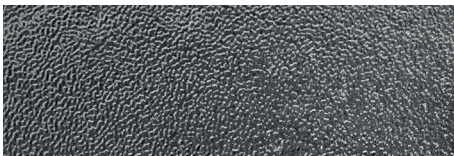
ISO 15106-3: Covering joints and trimmed edges with Cello® ALU-01 ensures that the same high water vapor tightness is maintained across the entire aluminum surface

#### TIGHTNESS

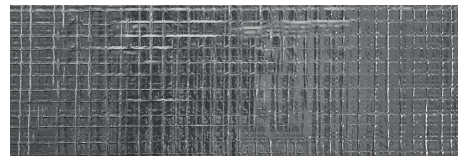
ECE R-118, annex 9 fulfilled: material repels fuels and lubricants (PUR-01)

#### BENEFITS

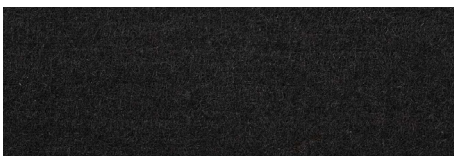
- ▶ Excellent adhesion on a wide range of substrates
- ▶ High flexibility for effortless application around edges
- ▶ Easy and fast fixation



Cello® ALU-01



Cello® ALU-04



Cello® VLC-01



Cello® VL-53



Cello® PUR-01

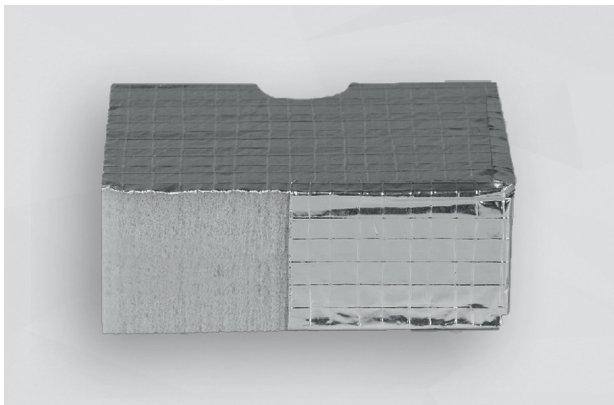
## CELLO® ADHESIVE TAPES

PRODUCT	DESCRIPTION	ELONGATION AT BREAK / ISO 9073-3 Elongation of a test piece at breaking force	BREAKING FORCE / ISO 9073-3 Maximum force applied during the elongation-to-break test
ALU-01	Aluminum tape, embossed silver-colored and scrim reinforcement for added tensile strength	approx. 4%	at least 150 N
ALU-04	Aluminum tape, smooth silver-colored and scrim reinforcement for added tensile strength	approx. 2%	at least 200 N
VLC-01	Non-woven tape: black, with scrim reinforcement to prevent elongation	approx. 25%	at least 50 N
VL-53	Non-woven tape: anthracite, with scrim reinforcement to prevent elongation	approx. 25%	at least 400 N
PUR-01	Film tape, black, with scrim reinforcement to prevent elongation	approx. 25%	at least 50 N

## DIMENSIONS

PRODUCT	THICKNESS [mm]	WIDTH [mm]	RUNNING LENGTH	RECOMMENDED TAPE WIDTHS FOR EDGE SEALING
ALU-01 / ALU-04	0.3 ± 0,1	40, 50, 60, 70 ± 2	33 m / reel	Material thickness 10 mm » 40 mm wide tape
VLC-01 / VL-53	0.9 ± 0,1			Material thickness 20 mm » 50 mm wide tape
PUR-01	0.3 ± 0,1			Material thickness 30 mm » 60 mm wide tape
				Material thickness 40 mm » 70 mm wide tape

Other width on request.



Cello® HR 290 ALG-04 edges covered with Cello® ADHESIVE TAPES ALU-04



Cello® 451 edges covered with Cello® ADHESIVE TAPES VLC-01