



DATA SHEET



CELLO® 491 | CELLO® 492

Cello® 491: Noise-absorbing PUR foam laminated with an air-permeable film that has been optimized for acoustic effectiveness. Suitable for applications involving relatively high humidity levels.

Cello® 492: Same as 491 but laminated with an impervious black film.

Applications: Construction and farm machinery, buses/utility vehicles, household appliances, heating/ventilation/AC systems, cabins/casings/hoods, machine construction, medical technology, motorboats/yachts



TECHNICAL DATA

| | |
|-------------------------------|--|
| FLAMMABILITY | <ul style="list-style-type: none">▶ FMVSS 302, DIN 75 200: fulfilled▶ ISO 3795: burning rate < 100 mm/min▶ ECE R-118: annexes 6, 7 and 8 fulfilled (491 SK, ≥ 13 mm)▶ DIN EN ISO 9094: oxygen index (OI) of at least 21% fulfilled (491 SK, ≥ 10 mm) |
| TEMPERATURE RESISTANCE | -40°C to +100°C |
| THERMAL CONDUCTIVITY | EN 12667: ≤ 0.040 W/(m·K) at 10°C |
| DENSITY PUR-FOAM | DIN EN ISO 845: 24 kg/m ³ |

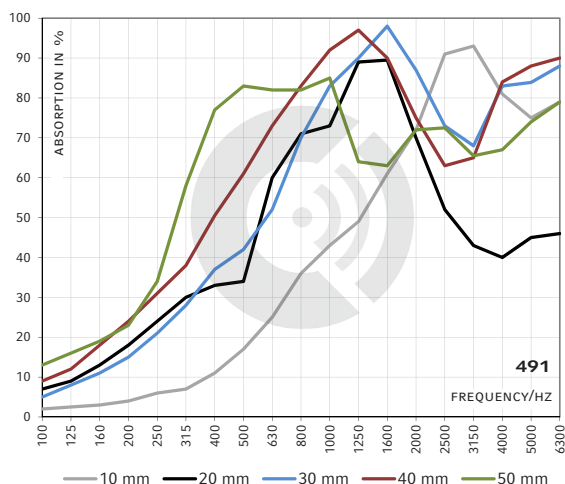
DIMENSIONS

| PRODUCT | THICKNESS [mm] | THICKNESS TOLERANCE [mm] | SHEETS* [mm] | ROLLS* |
|------------|--------------------|--------------------------|-------------------------------|---|
| 491 492 | 10, 20, 30, 40, 50 | ± 1 | 1050 x 1500 or 2100 x 1500 | Length: max. 60 m (depending on thickness) Width: 1500 mm |

Other thicknesses / dimensions on request. Ready-to-use parts according to your specifications or drawing.

*Untrimmed: Effective dimensions guaranteed as ordered, may be exceeded by some layers (foam, film, non-woven etc.).

IMPEDANCE TUBE / DIN 10 534-2

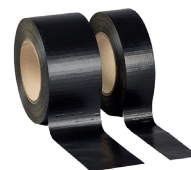


BENEFITS

- ▶ Oil,- water- and fuel-repellent surface
- ▶ Surface can be wiped clean
- ▶ Good sound absorption values
- ▶ Effortless to cut with a cardboard cutter
- ▶ Suitable for use in relatively humid conditions

ADVICE

If you need to seal cut edges or cover joints and seams, we recommend our adhesive tape Cello® PUR-01



SEE OUR PROCESSING AND STORAGE INSTRUCTIONS

ISO 9001 CERTIFIED

Details and values given in this leaflet are average values and have been compiled with care. They are not binding, however, and Cellofoam International GmbH & Co. KG disclaims any liability for any damages and detriments, also in connection with any third party's rights. The information given does not release the buyers from making the necessary experiments and tests themselves. Subject to technical changes. For updates of this data sheet, please go to our website.

sales@cellofoam.de
www.cellofoam.de

| OPTIONS | (FURTHER OPTIONS ON REQUEST) |
|-----------|--|
| 491 NK | no self-adhesive equipment |
| 491 SK | with self-adhesive finish |
| 491 SBF | with Cello® SBF heavy layer on the rear face, hence noise attenuation and noise insulation in a single product. Thicknesses and dimensions on request. |
| 491 EVA | with Cello® EVA heavy layer on the rear face, hence noise attenuation and noise insulation in a single product. Thicknesses and dimensions on request. Suitable for applications in motorboats/yachts. |
| 491 CS-01 | trimmed edges spray-coated for protection against the ingress of dirt and humidity. Option available only for cut-to-measure parts. |
| 492-03 | acoustically effective PUR foam laminated with an impermeable white film. DIN EN ISO 846: Method A: 1b, 1b, 1c Method c: 0 (no growth visible when viewed under the microscope) |

FLAMMABILITY

- ▶ FMVSS 302, DIN 75 200: fulfilled
- ▶ ISO 3795: burning rate < 100 mm/min

FLAMMABILITY

- ▶ FMVSS 302, DIN 75 200: fulfilled
- ▶ ISO 3795: burning rate < 100 mm/min
- ▶ DIN EN ISO 9094: oxygen index (OI) of at least 21% fulfilled (491 EVA 3-01 SK, ≥ 10 mm)

FLAMMABILITY

- ▶ FMVSS 302, DIN 75 200: fulfilled
- ▶ ISO 3795: burning rate < 100 mm/min

FLAMMABILITY

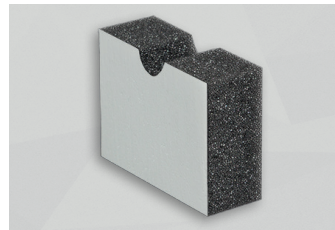
- ▶ FMVSS 302, DIN 75 200: fulfilled
- ▶ ISO 3795: burning rate < 100 mm/min



491 SBF / 491 EVA



491 CS-01



492-03