

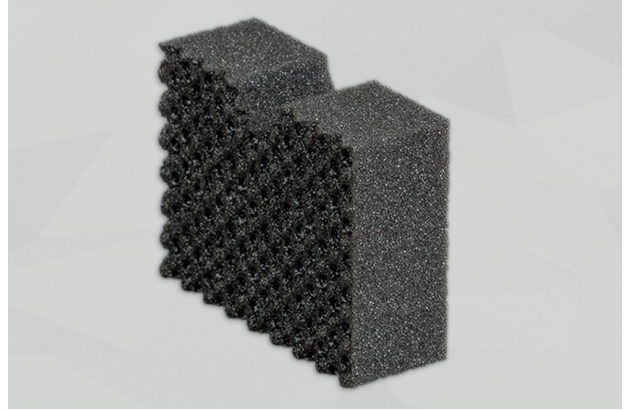


CELLO® 470

Noise-absorbing PUR foam with an air-permeable, sealed surface (special Cello® process).

The surface has been densified and embossed with an attractive dimpled pattern.

Applications: Construction and farm machinery, heating/ventilation/AC systems, cabins/casings/hoods, machine construction, medical technology



TECHNICAL DATA

FLAMMABILITY	<ul style="list-style-type: none"> ▶ FMVSS 302, DIN 75 200: fulfilled ▶ ISO 3795: burning rate < 100 mm/min
TEMPERATURE RESISTANCE	-40°C to +100°C, short-term up to +120°C
THERMAL CONDUCTIVITY	EN 12667: ≤ 0.040 W/(m·K) at 10°C
DENSITY PUR-FOAM	DIN EN ISO 845: 24 kg/m ³

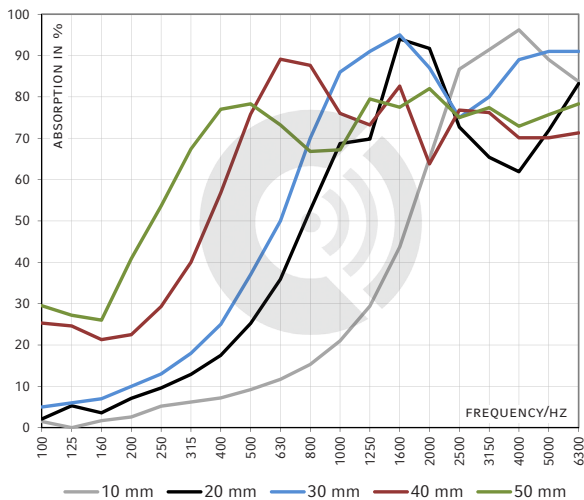
DIMENSIONS

PRODUCT	THICKNESS [mm]	THICKNESS TOLERANCE [mm]	SHEETS* [mm]	ROLLS*
470	10, 20, 30, 40, 50	± 1	1050 X 1500 or 2100 X 1500	Length: max. 60 m (depending on thickness) Width: 1500 mm

Other thicknesses / dimensions on request. Ready-to-use parts according to your specifications or drawing.

*Untrimmed: Effective dimensions guaranteed as ordered, may be exceeded by some layers (foam, film, non-woven etc.).

IMPEDANCE TUBE / DIN 10 534-2



BENEFITS	<ul style="list-style-type: none"> ▶ Robust and resilient surface ▶ Largely resistant to oil, water and fuel ▶ The regular surface pattern makes perfectly aligned mounting possible ▶ Good sound absorption values ▶ Effortless to cut with a cardboard cutter ▶ Free of halogens
OPTIONS	<ul style="list-style-type: none"> NK: no self-adhesive equipment SK: with self-adhesive finish

Other options on request.