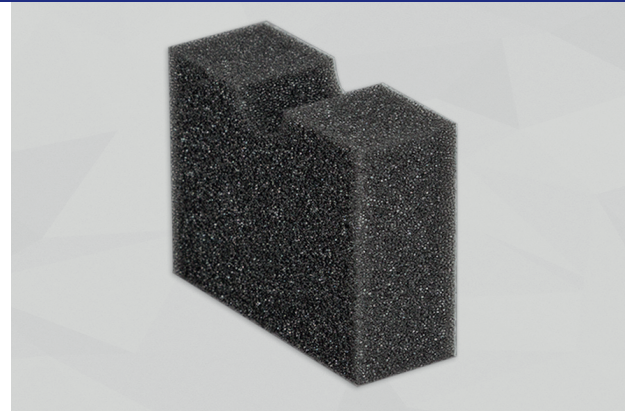




CELLO® 461/0

Noise-absorbing PUR-foam with an untreated surface, especially suitable for applications involving relatively high humidity levels.

Applications: Buses/utility vehicles, construction and farm machinery, cabins/casings/hoods, machine construction



TECHNICAL DATA

FLAMMABILITY	<ul style="list-style-type: none"> ▶ FMVSS 302, DIN 75 200: fulfilled ▶ ISO 3795: burning rate < 100 mm/min ▶ ECE R-118: annexes 6, 7 and 8 fulfilled (sk, ≥ 13 mm)
TEMPERATURE RESISTANCE	-40°C to +100°C
THERMAL CONDUCTIVITY	EN 12667: ≤ 0.040 W/(m·K) at 10°C
DENSITY PUR-FOAM	DIN EN ISO 845: 24 kg/m ³

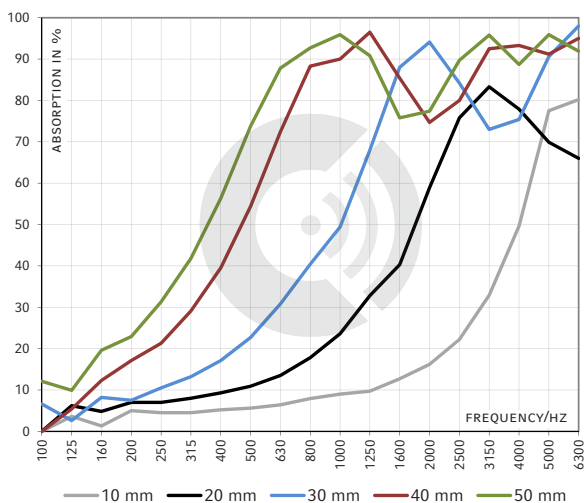
DIMENSIONS

PRODUCT	THICKNESS [mm]	THICKNESS TOLERANCE [mm]	SHEETS* [mm]	ROLLS*
461/0	10, 20, 30, 40, 50	± 1	1050 x 1500 or 2100 x 1500	Length: max. 60 m (depending on thickness) Width: 1500 mm

Other thicknesses / dimensions on request. Ready-to-use parts according to your specifications or drawing.

*Untrimmed: Effective dimensions guaranteed as ordered, may be exceeded by some layers (foam, film, non-woven etc.).

IMPEDANCE TUBE / DIN 10 534-2



BENEFITS	<ul style="list-style-type: none"> ▶ Excellent absorption values, especially for higher thicknesses ▶ Suitable for applications with relatively high humidity levels ▶ Effortless to cut with a cardboard cutter
OPTIONS	<p>461/0 NK: no self-adhesive equipment</p> <p>461/0 SK: with self-adhesive finish</p> <p>461/0 SBF: with Cello® SBF heavy layer on the rear face, hence noise attenuation and noise insulation in a single product. Thicknesses and dimensions on request.</p>

Other options on request.